

**SPECIFICATION**

**Plasma Size** : Suitable for 23" to 37"

**Wall Plate Dimension** : 470mm (18.5") x 220mm (8.7")

**Length of Hook** : 360mm (14.2")

**Distance from Wall** : 60.3mm (2.4")

**Load Capacity** : 36kg (80 lbs)

\*\* For details and updated Command and Program Software, please visit and download from [www.abtussingapore.com](http://www.abtussingapore.com)

\*Specifications are subject to changes without notice.

# Plasma/ LCD Display Tilt Wall Mount

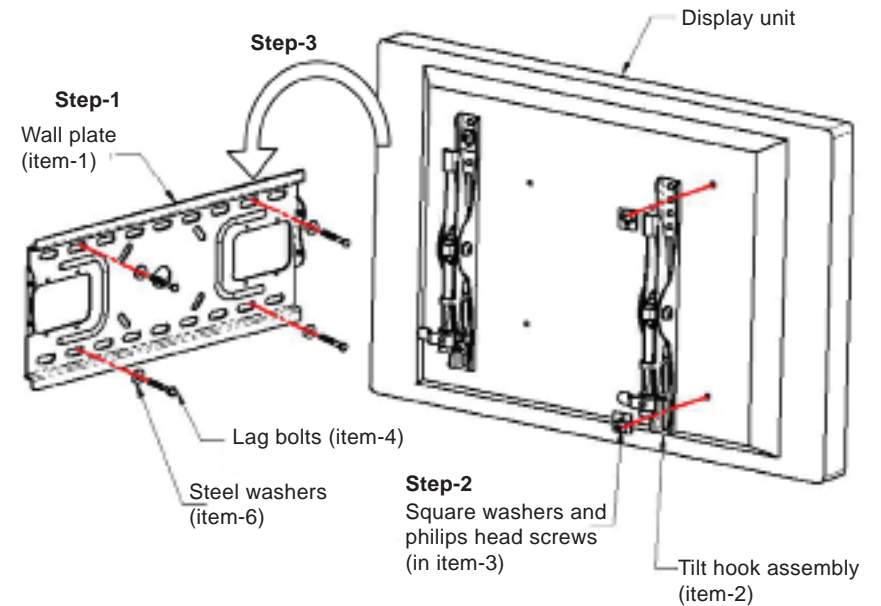


Model: AV480-W2T

## COMPONENTS

<p><b>Item 1 -</b> Wall Plate - 1 pc</p>	<p><b>Item 2 -</b> Tilt Hook Assembly - 2 pcs</p>	<p><b>Item 3 -</b> Hardware Kit - 1 pc</p>
<p><b>Item 4 -</b> Lag Bolts - 4 pcs</p>	<p><b>Item 5 -</b> Wall Anchor - 4 pcs</p>	<p><b>Item 6 -</b> Steel Washers- 4 pcs</p>

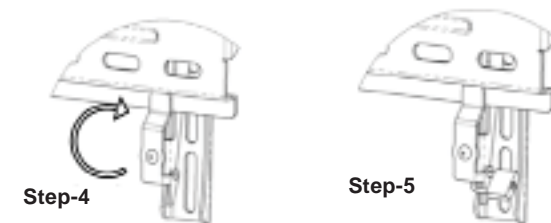
## MOUNTING



**Step 1:** Mount Wall plate (item-1) to wall with Lag Bolts (item 4), Steel Washers (item 6), Wall Anchors (item 5) (for concrete wall only).

**Step 2:** Fix Hook Assembly (item 2) onto Display unit with Square Washers and Philips head screws (in item 3)

**Step 3:** Lift and lower Display unit onto Wall Plate.



**Step 4:** Lock Display unit to Wall Plate

**Step 5:** Add Pad-lock for security, if necessary.

**NOTE:** Do consult a qualified and authorized service technician if you encounter any technical difficulties. We are not liable for any damage or injuries arising from any improper installation or mishandling. Now, enjoy your Plasma display unit !!