

SPECIFICATION

Plasma Size : Suitable for 23" to 37"

Wall Plate Dimension : 430mm (16.9") x 175.4mm (6.9")

Length of Hook : 232mm (9.1")

Tile Angle : 12 degrees

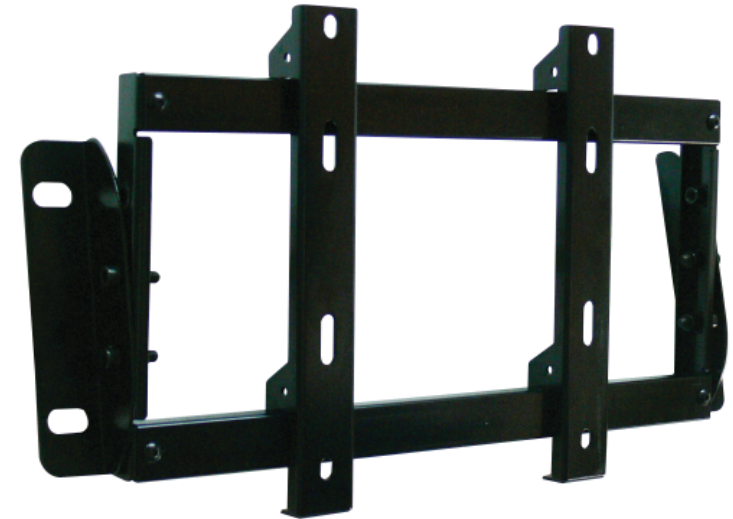
Distance from Wall : 50mm (1.97")

Load Capacity : 36kg (80 lbs)

** For details and updated Command and Program Software, please visit and download from www.abtussingapore.com

*Specifications are subject to changes without notice.

Plasma/ LCD Display Tilt Wall Mount

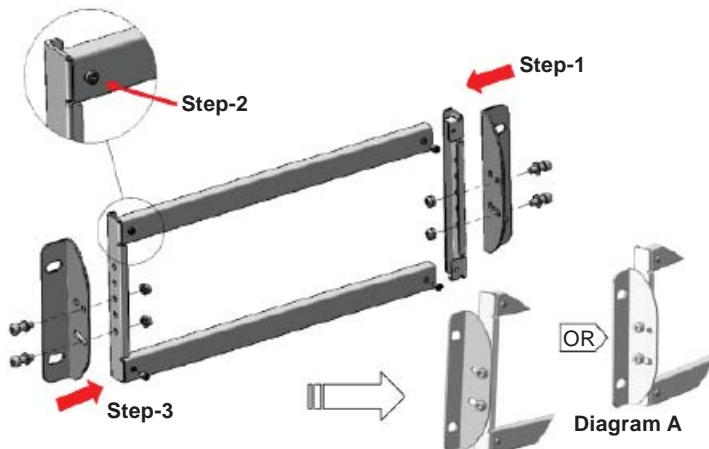


Model: AV483-L360A

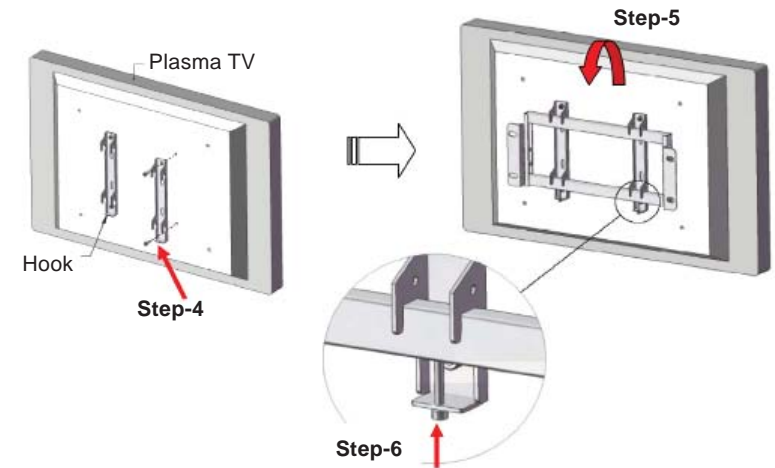
COMPONENTS

(a) Rectangular Tube - 2pcs	(b) Hook - 2pcs	(c) Side Bracket - 2pcs	
(d) Tilt Bracket Right/Left - 1 pc each	(e) Self Tapping Screw - 4pcs	(f) Cap Screws - 4pcs	(g) Washers - 4pcs
(h) M4 x 35 Screws - 2 pcs	(i) M4 x 15 Screws - 6 pcs	(j) M5 x 15 Screws - 4 pcs	(k) M6 x 15 Screws - 4 pcs

INSTALLTION



INSTALLATION



Step 1: Insert Side Brackets (c) into Rectacgular Tubes (a).

Step 2: Secure with Self Tapping Screws (e) provided.

Step 3: Fix Tilt Brackets (d) onto Side Brackets (c) on left and right side with Cap screws (f), and Washers (g)

Note: use inner hole for a closer space between wall and Plasma without tilting function (see Diagram A)

Step 4: Fix Hooks (b) on to back of Plasma TV with screws (i), (j) or (k)

Note: if screws provided can;t fit, please refer to the Plasma TV user manual for the correct mounting thread screw size.

Step 5: Fix Bracket onto Wall (not shown). Lift and hook Plasma TV onto Bracket.

Step 6: Secure Plasma TV with Hook with screws (h) provided.

NOTE: Do consult a qualified and authorized service technician if you encounter any technical difficulties. We are not liable for any damage or injuries arising from any improper installation or mishandling. Now, enjoy your Plasma TV unit !!